

# the Homesteader

**Mission Statement (Adopted 2018):** The Ellis County Historical Society Museum collects, preserves, and exhibits Ellis County History for the surrounding community and its visitors.



## 2023 ECHS BOARD

### President

Priscilla Hunt

### Vice President

Alex Herman

### Secretary

Donna Maskus

### Treasurer

Cheryl Stramel

### County Liaison

OPEN

### TRUSTEES

Matt Odom

Lyle Johnston

Debra Ludwig

Holly Unrein

Jerry Braun

Norman Clark

Braden Splichal

Greg Atkins

Mary Kay Schippers

Marco Macias

Brad Ricke

Linda Glassman

### ECHS STAFF

#### Executive Director

Amanda Rupp

#### Curator

Adam Conkey

#### Administrative Assistant

Cynthia Stone

#### Archives/Research Assistant

Patty Nicholas

## PAPER MOON

The early 70s, for those who remember, saw the completion of Interstate 70 through Hays, Kansas. Ellis County Historical Society became a foundation for county archival history. Nationally, Richard Nixon felt pressure to resign from the growing dissent from the Watergate Scandal. Gasoline shortages, in the summer of 1973, saw less of an effect on local consumers than more populous areas of the country, though they caused worry for the Kansas tourism industry. The Vietnam War was winding down, but national headlines were concerned about prisoners of war betraying their country. For this county and the areas surrounding, however, 1972 witnessed the arrival of a Hollywood film crew and in 1973, the film's premiere.



Few have heard of the 1971 novel *Addie Pray* by Joe David Brown, but some readers might remember what happened in Ellis County and the surrounding area in 1972 as a result of the novel's adaptation to screenplay. Film director Peter Bogdanovich brought out father and daughter team Ryan and Tatum O'Neal, comedienne Madeline Kahn, and Randy Quaid, among others, to star in an upcoming production and was filmed using many local extras, actors, and locations. Most readers will remember Addie Pray as the title character in *Paper Moon*, a role that won Tatum O'Neal an Academy Award for Best Supporting Actress in 1974. The title changed by way of influence of the carnival scene where main characters Moze and Addie pose at the paper moon photo stand. Peter Bogdanovich added the song "It's Only a Paper Moon" by Ella Fitzgerald to the soundtrack as a callback to that scene and so decided to change the title. He also moved the setting of the book from Alabama to Kansas.

Bogdanovich was looking for that heavy depression era look to fit the picture and scouted western Kansas to bring that suspension of disbelief to the film. Hard up, the characters in the film take on the set pieces well enough. Most of the locations present in the finished film were in Ellis, Rush, and Russell counties, with the notable Ryan's Block building on 10<sup>th</sup> St. in Hays, the Gorham Depot in Gorham, and the Midland Railroad Hotel in Wilson. Whatever that says about early '70s Highway 40, I cannot say, but they fit the era better here than in southern California at the time.

## UPCOMING EVENTS:

### Volunteer Work Nights

Summer months will focus on cleaning artifacts and office tasks.

**COME & GO**

### NOTORIOUS

#### Smoky Hill Museum traveling exhibit

Exhibit will be in the newly remodeled basement space, ECHS main building at 7th and Main.

#### Hays Council Summer Art Walk

Out buildings and Notorious exhibit will be open and water-melon will be served (back by popular demand)!

*July 2nd*  
Wild West Weekend

#### **Family Fun Day**

Return of the infamous SLING SHOT

*Herzogfest*  
Visit our booth directly north of the swimming pool. We will delight and refresh you!

## FROM THE DESK OF THE EXECUTIVE DIRECTOR

Wow, we have been busy! Each week I am even more excited about the progress ECHS is making. I continue to be extremely grateful for the board and volunteers who make us look so good. None of this would be possible without such a wonderful team.

A quick update on the tasks that have my priority these days. During the spring I submitted two very large, multi-million dollar grant requests. One to the Schmidt Foundation for assistance in our efforts to save AND utilize the red brick building on our main Hays campus. The other was a one-time opportunity through the Kansas Commerce Department called the SPRINT Grant (State Park Revitalization and Investment in Notable Tourism) for funds to develop a sister site museum at St. John's Place in Victoria KS. Stay tuned as we anxiously await announcements.

The masonry repairs of the limestone and brick buildings, funded in large part by the Heritage Trust Fund, are currently being completed. The largest failure in NE corner of the limestone church has grown since the company was first here to layout the contract over 18 months ago. More intensive foundation work will need to be done.

I am excited to share that two people have joined our crew as part-time employees. Cynthia Stone, who served as ECHS Trustee in 2022, is now our Administrative Assistant/Bookkeeper. She volunteered hundreds of hours last fall learning and assisting me in organizing the bookkeeping practices; this made her a turn-key option for an employee. What a time saver! Just last week Patty Nicholas has stepped into the Archives/ Research Assistant position. Patty has worked at Forsyth Library for many years in special collections. We are happy she has agreed to come out of retirement to aid us in cataloging our ECHS archives into the Past Perfect Museum software. This is an important first step in our goal to have searchable archives.

Finally, I would like to share my condolences to the family and friends of Janel Moore.

She was a wonderful woman who became a mentor to me in many ways. Janel was dedicated to keeping the Volga German heritage of Ellis County alive and relevant to future generations. Her bright spirit, positive attitude, and leadership is deeply missed.



MANN THEATRES  
**FOX** 1202 MAIN  
625-9567

**NOW SHOWING**  
7:15 - 9:00


The Directors Company presents  
**RYAN O'NEAL**  
A **PETER BOGDANOVICH**  
PRODUCTION  
**"PAPER MOON"**

"ONE OF THE FIVE BEST PICTURES OF THE YEAR! TATUM O'NEAL HAS AN EXPRESSIVE FACE AND A NATURAL ACTING TALENT THAT COULD EARN HER AN ACADEMY AWARD!"  
—Vernon Scoll, U.P.I.

"PICTURE OF THE MONTH!"  
—Seventeen Magazine

PG  
A Paramount Release

ADULTS 1.50  
STUDENTS 1.25  
CHILD 75¢



The movie begins in a country cemetery located between McCracken and Liebenthal. Historically, the last burial took place in 1969, but the film, presumably, has the honor of having the last hole dug for a burial in that cemetery in 1972, though it was only a prop (unless someone since has come along to dig another like hole). McCracken and Dorrance had more filming locations than Hays proper. King's Hill, north on Codell Road, on the border between Rooks and Ellis Counties, the last sweeping shot takes the viewer into oilfield country. Incidentally, when the television series production began and debuted later in 1974, Hays featured more in filming of that series than the previous motion picture.

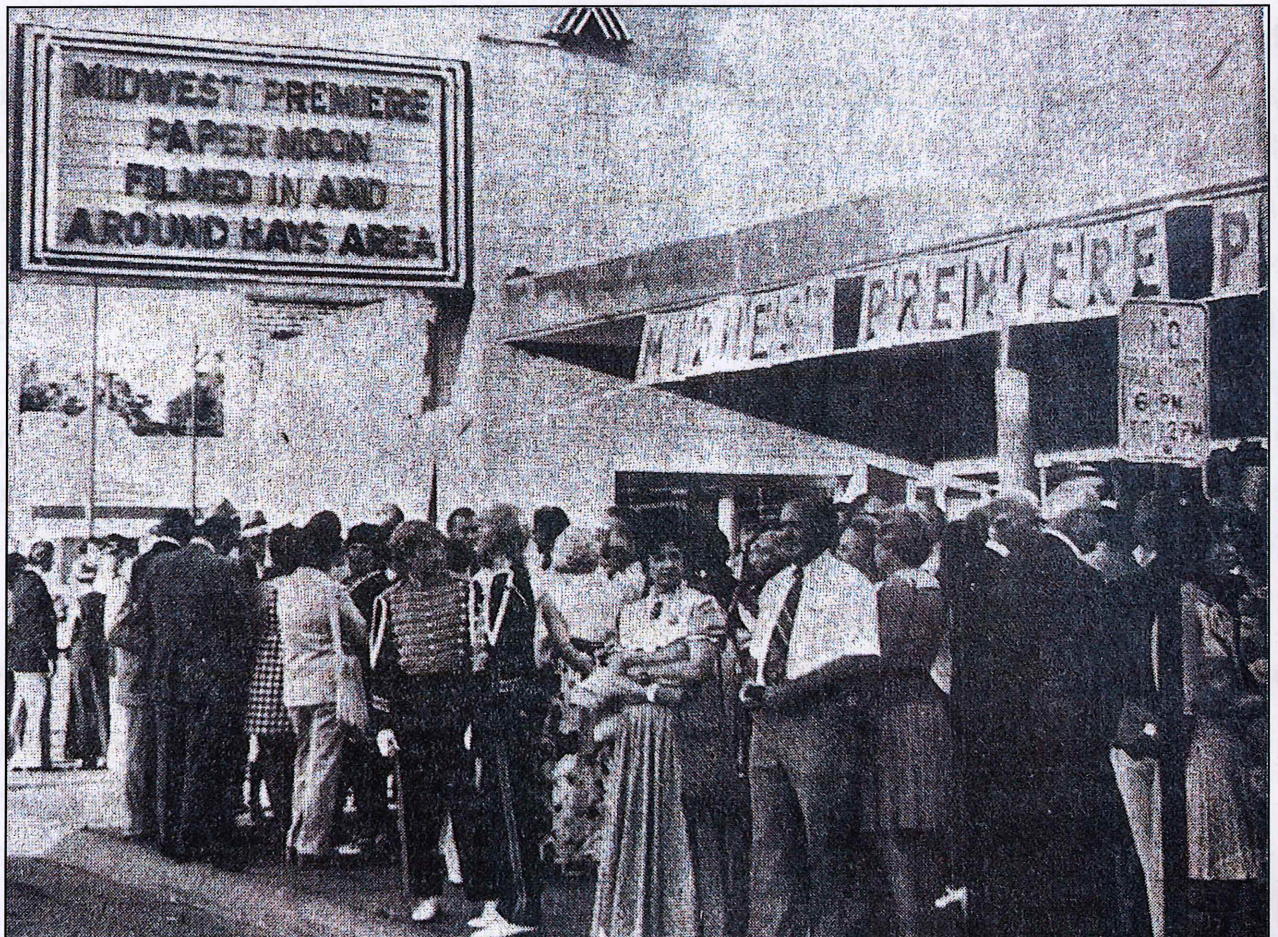
Later the following year, the film debuted in Hollywood in April, after which it took another four months to premiere at the Fox Theater in Hays. *Paper Moon* premiered on Thursday, July 11. Hundreds waited in line to see it. Props and memorabilia were available in a drawing, and one the artists, Terry Peters who produced work for the carnival scene in the movie, had his work on display and for sale. The Hays Arts Council, the first of its kind in the state, having formed in 1967, had a big hand in

organizing the premiere six years after its foundation. Their chair and vice-chair even wore "tails" and served champagne after the showing. Most of the secondary actors and extras were native to western Kansas. They were present at the premiere and awestruck at seeing themselves on the big screen.

For those of our members present at the filming or at the premiere, or any who acted or were an extra in it,

please send us photographs or email your memories of the event for our future records.

We love every story, no matter how short, stop by and talk to us. Look for us at local events at the Midland Railroad Hotel in Wilson on Saturday May 6, or at the summer Art-walk in Hays put on by the Hays Arts Council.



# NOTORIOUS

Kansas' history is filled with colorful characters that have shaped the state we know today. Through the passage of time, perspectives change and reality can give way to legend. Lines begin to blur just exactly who is truly deserving of the title NOTORIOUS.

This engaging exhibit will explore a selection of so called Notorious figures from Kansas' past, leaving the visitor to answer just what made them receive such a title. Perhaps they might even disagree.

## - FEATURED INDIVIDUALS -

THE BLOODY BENDERS

BONNIE & CLYDE

JOHN BROWN

CARRY NATION

SUSANNA SALTER

WILLIAM CODY

WILD BILL HICKOCK

SATANTA

JOHN STEUART CURRY

JOHN BRINKLEY

WALTER CRAVENS

CHARLIE PARKER

THOMAS PENDERGAST

**JUNE 1st — AUGUST 31st**

This summer the traveling exhibit NOTORIOUS will be displayed in the newly remodeled basement commons space in ECHS main brick building at 7th and Main. To access the basement please use the office entrance door located on the east side of the building, ground level door right off of 7th/Main corner (behind the limestone museum sign). At this time no ramp is available to this level, but we are working towards entrance accessibility soon!

Also available this summer is the Sternberg Firearm Collection. This exhibit was on display last summer and is back with added Native American and pioneer artifacts. Along with a number of weapons that were not on display last season. There is a ramp to this exhibit located in the historical limestone church, just west of the red brick building. Ramp was financed in part by The Heartland Community Foundation 2022 Spring Grant cycle.

**ALL GALLERY ENTRIES ARE FREE OF CHARGE FOR SUMMER 2023!**



This exhibit is part of the traveling exhibits produced at Smoky Hill Museum in Salina, KS. We are excited to be able to share it with our community and the travelers during the tourist season.

Looking forward.....

KMA WILL BE IN HAYS  
NOV '23

AHSGR NATIONAL CON-  
FERENCE WILL BE HELD  
IN HAYS COUPLE YEARS

OVER 100 VISITORS IN  
FIRST QUARTER FOR  
NEW OFFICE how to en-  
ter

2 INTERNS FROM  
NEXGEN (Logo) INTERN  
PROGRAM WILL BE



HERE THIS SUMMER

REMINDER

KROGER NUMBERS  
(please sign up for Krog-

## The Notorious Custer

The Chronicles of Custer is a new book by freelance author and retired journalist Matt Vincent of Yuma, Colorado accompanied by the illustrations of Brigitte Shafer. Vincent himself brought the book through Hays in February of this year seeking new markets for his literature and so managed to find the curator during one of the driest months of tourism in the year at historic Fort Hays.

Accurate and informative, Vincent weaves the beginning of each chapter with a contemporary account of the critical months of George Custer's first campaign through the High Plains in 1867. He takes a more critical look at a short period of time concerning the infamed personality and his wanderings through parts of western rich hunting grounds, including the details of a lone hunting expedition, a chronicle in a popular eastern New York hunting periodical, and the abandoning of the 'Ginnell's' duties.

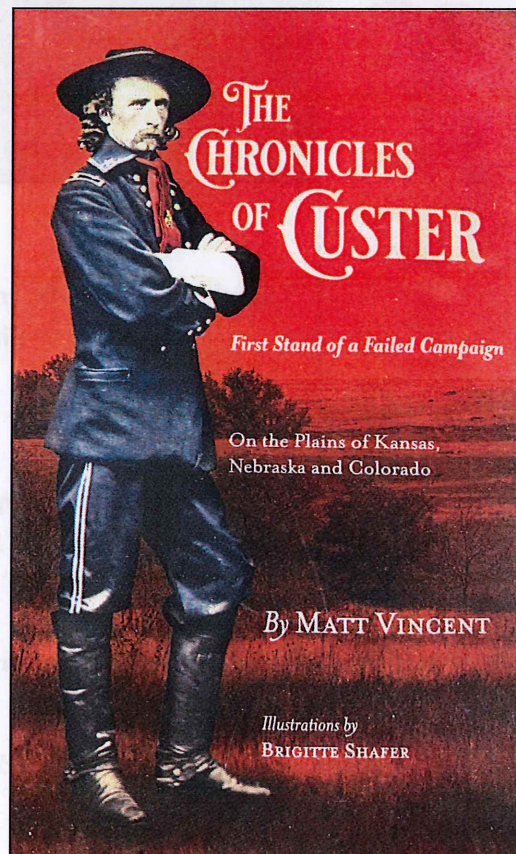
One of the absolute selling points of the book happens to be the illustrations created by Brigitte Shafer, located throughout the entirety of the chapters. She takes a noted picture of some renown and sketches it in her own intricate and detailed way to provide a smooth transition from the periodicals of the past, not unlike a modern Harper's Weekly. Talent, in that regard, is not lacking, and we appreciate the years of work needed to create these individual pieces.

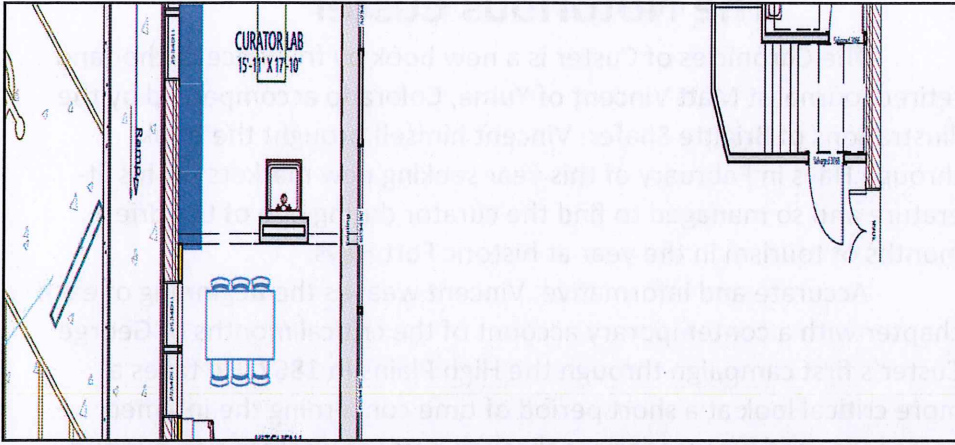
Vincent could have used photographs; he chose an artist. He could have left the contemporary accounts out, but he added that flavor to the exact moment for perspective. He isn't wholly unique considering his take of writing history or putting together material in this format, though he has told the story in way not many do. He has written a critical analysis and not resorted to even the slightest amount of hero worship that normally follows the name 'Custer.'

Make a note to stop on by the museum to review our copy. Matt Vincent's information for purchasing the book will be made available to you there. And if you've read it and would like to petition to have the work added to our gift shop for others to purchase locally, demand it of us!

As always, thanks for stopping by!

Reviewed by Adam  
Conkey





**Heartland  
Community  
Foundation**

An affiliate of the  
Greater Salina Community Foundation



**BRICK-BY-BRICK**



Drawings Provided By:  
**Commercial Builders, Inc.**  
2717 Canal Blvd | Hays, KS 67601  
Telephone: (785) 628-1031  
Fax: (785) 628-6788

**Ellis County Historical Society**  
ADA Facility Upgrades  
100 W. 7th St.  
Hays, KS 67601

**Version: #1**  
Revision 000  
0/0/0

**DATE:**  
1/25/2023

**SHEET:**  
**AR1**

**Basement Accessibility**

South Entry Ada Door Entrance & Parking Area	\$54,534.00	}	<b>\$119,352.00</b>
Kitchen/curator Lab Update	\$43,790.00		
Ada Restroom Retrofit	\$21,028.00		

**Exterior Stucture**

Masonry Repairs To Red Brick Church	\$58,440.00	}	<b>\$88,235.00</b>
Masonry Repairs To Historic Limestone Church	\$29,795.00		
Gutter Replacement On Historic Limestone Church	\$1,950.00	}	<b>\$4850.00</b>
Downspouts Replacement On Red Brick Church	\$2,900.00		

**Infrastructure**

Complete New Hvac System Throughout Building	\$600,000.00	<b>\$600,000.00</b>
--	--------------	---------------------

**PHASE 2 TOTAL: \$812,437.00**



The Ellis County Historical Society extends our gratitude to The Heartland Community Foundation for its fall grant cycle award of \$2,935. These funds from the Dane G. Hansen Community Grant Fund paid for the feasibility study done by Commercial Builders for Phase 2 renovations to the Presbyterian red brick building in Hays. These cost estimates helped outline our Brick-by-Brick fundraising campaign for Phase 2.

Plans for Phase 2 were announced at the annual meeting on January 30. Phase 2 addresses the infrastructure of the building. It will encompass renovation of the kitchen area, the basement bathroom to unisex handicap-accessible, excavating the south lawn for handicap parking, and repairing cracked and leaking mortar joints in the exterior brick walls.

Approximately 70% of the cost of Phase 2 will be an investment in a state-of-the-art heating and air system with humidity controls that will protect our treasure for future generations to enjoy. We need reliable systems to eliminate excess humidity and control temperatures so we will never again lose precious artifacts to mold.

**Historic Preservation  
in Progress**  
LEARN MORE ABOUT FUNDING AND BENEFITS AT [KSHS.ORG](http://KSHS.ORG)

FUNDING PROVIDED BY THE  
**Heritage Trust Fund**

KANSAS  
HISTORICAL  
SOCIETY  
HISTORIC  
PRESERVATION  
OFFICE

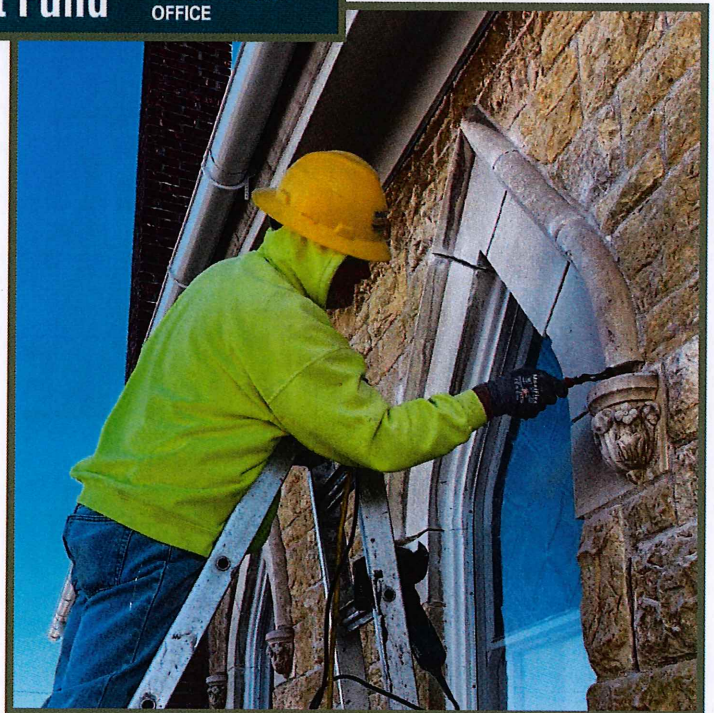
The total cost of Phase 2 is \$850,000.

We are actively searching and applying for grants to help with these costs.

The Ellis County Historical Society has been awarded a grant of \$84,706 from the Heritage Trust Fund (HTF) for brick work on the First Presbyterian Church as one of seven projects funded by The Kansas Historic Sites Board of Review.

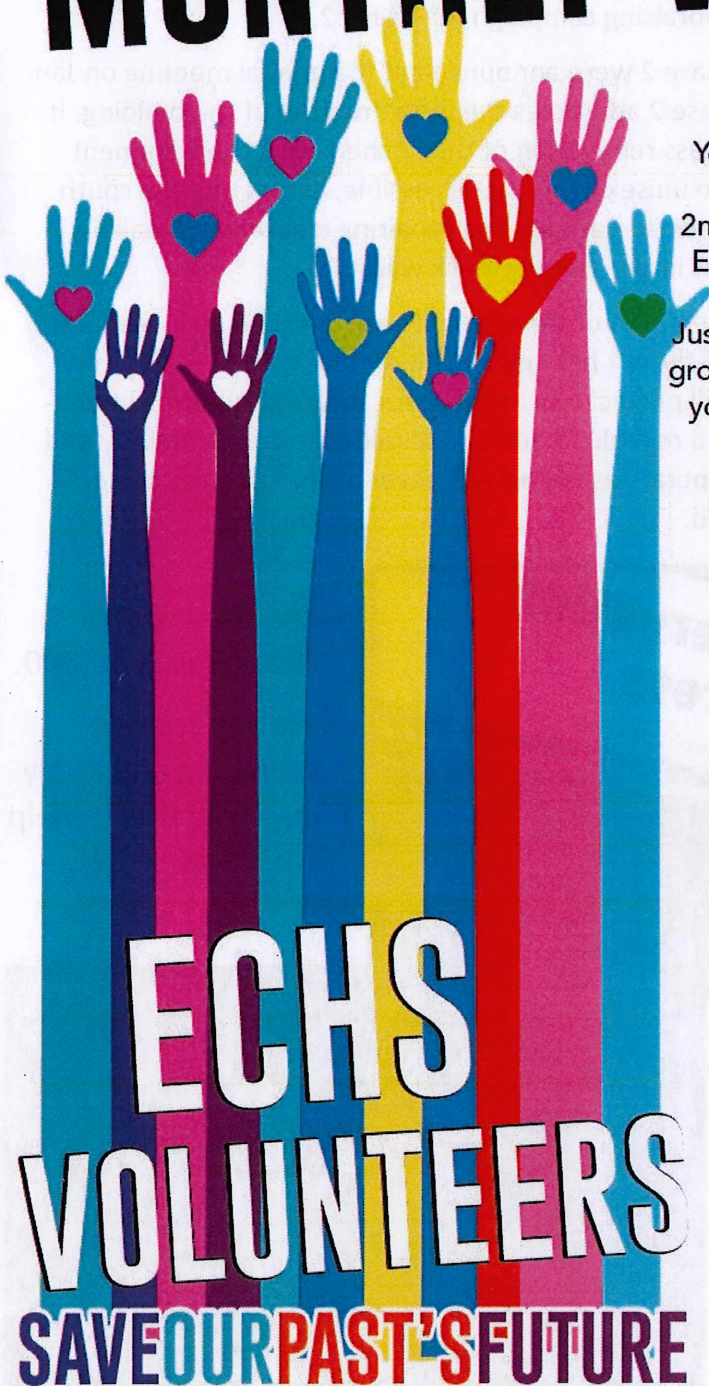
A total of 36 applicants requested over \$2.78 million during this grant round. HTF grants reimburse expenses for projects that preserve or restore qualifying historic properties.

Work began at the beginning of April and should see completion in mid-summer 2023.



"If you think you are too small to be effective, you have never been in bed with a mosquito."  
— Betty Reese

# MONTHLY WORK NIGHT



You are invited to the Ellis County Historical Society's VOLUNTEER TUESDAY which happens on the 2nd Tuesday of every month, from 6 pm to 8 pm at the ECHS Main Campus in Hays. This is a "COME & GO" event and you don't need to register in advance. Just come on down! Bring your organization, your youth group, your friends or just you! Training will be provided; you will meet new friends and learn new skills. AND! - get a peek at what we do behind the scenes.

OUR FIRST VOLUNTEER TUESDAY IS

**MAY 9TH**

**BEGINNING AT 6 PM**

CORNER OF 7TH & MAIN — DOWNTOWN HAYS

"Don't ever question the  
VALUE OF VOLUNTEERS.

Noah's Ark was built by volunteers,  
the Titanic was built by professionals."

— Dave Glynn

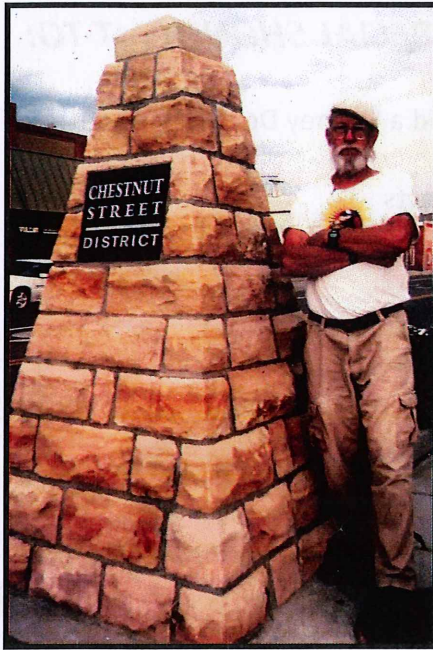
**WE HAVE A VARIETY OF TASKS, SUITED FOR ANYONE —  
FROM DATA ENTRY TO LIGHT LIFTING AND ORGANIZING.**

**WE HAVE THE CAUSE.**

**YOU WILL MOST CERTAINLY HAVE THE EFFECT!**

To us you are THE most precious resource. At ECHS, we run and grow on the time given so generously by our volunteers. We believe if you help us build it, they will come! Our volunteers make a difference today for the generations to come.





## **HAPPY BIRTHDAY Pete!**

“He who works with his hands is a labourer.

He who works with his hands and his head is a craftsman.

He who works with his hands and his head and his heart is an artist.” — Saint Francis of Assisi

“I saw the angel in the marble and carved until I set him free.” – Michelangelo

Watch us on the latest edition  
of Cottonwood Connections by Ed Lowry  
“Cultural Heritage of the High Plains”  
<https://youtu.be/ID3MYheToPM>

SAVE THE DATE!  
TRIVIA NIGHT  
FEBRUARY 24, 2024  
DETAILS TO COME!



At each of these stops, locals will offer refreshments & snacks and members of Hays Symphony will provide music. On the bus, local guide, Jerry Braun, will provide a Volga-German history for each of these beautiful churches. At the end of the tour, participants are treated to a German meal, beverages and a polka band in Municipal Park. This is a benefit for the area's limestone churches and the Hays Symphony.

Registration is now open for the  
~ Bus Tour of Tour die Kapellen ~  
July 8, 2023.

*\$75 per Person. Limited Seats Available.*

A deluxe Village Tours Bus will transport you to  
Catherine Church

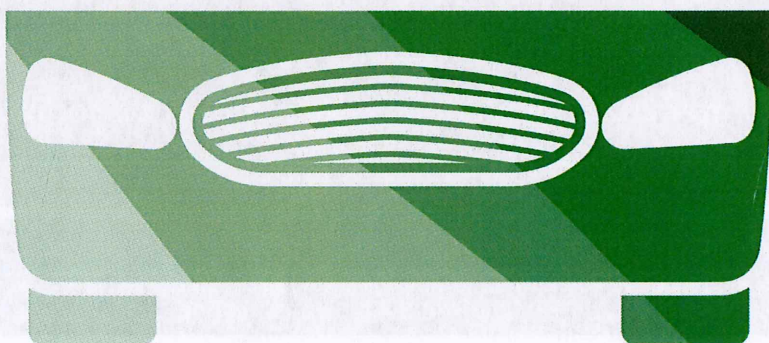
The Basilica of St. Fidelis in Victoria

Holy Cross Church in Pfeifer

St. Francis Church in Munjor

*(This is NOT organized by ECHS)*

**For more information and registration,**  
visit <https://tourdiekapellen.com/>



## WE APPRECIATE AND COMMEND ALL VOLUNTEERS, A SPECIAL SHOUT OUT TO:

Brad Ricke, Chair of our Grounds-Maintenance Committee has implemented a "Honey Do" system to track and complete work projects around our campus.

This industrious crew has already logged 42 volunteer hours on various projects including:

- o Removed the rest of the tree branches.
- o Disposed tree limbs at the Elis Co. Landfill.
- o Removed the campfire ring.
- o Placed stones around house SW bush.
- o Removed the rest of the railroad ties from 7th Street insurance sign.
- o Removed the limestone hitching post from 7th Street.
- o Cleaned up the limestone rock behind the house.



If you would like to help our grounds crew, especially over the summer months, please contact us!

**Check it out!** *We have updated PASTPERFECT! Your membership name and information should be correct and current. Please review your name, address, and expiration date on the back of this issue. To let us know of any corrections or to add an email to your account please return this form by mail with corrections indicated, OR send us an email at: [office@echshays.org](mailto:office@echshays.org) We will be mailing membership renewal letters in the next couple of weeks. We appreciate your support!*

# 2023

For all those who truly understand the value of history.

## Capital Donors

As our plans begin to be realized our need for funds increases in correspondence. ECHS is blessed to have growing support throughout the community. Although general operating funds are in most need currently, these capital funds set the timeline and pace for accomplishing our larger goals. Unlike membership and sponsorship dues, these gifts are sometimes a one time donation and the money donated goes directly towards capital improvements, it is not put into our general operating budget.

Robert & Susan Wolf

Ken & Diane Gottschalk

Stan & Joyce Newell

Harold G Family Trust

Robert Pfeifer

Dennis Bieker

Layton & Jerry Kaiser

Darrell & Barbara Werth

Insurance Planning

Cora M Schulte

Timothy & Linda Miller

ECHS Board of Trustees

Melanie Roth

James & Teresa Feyerherm

Jack & Nancey Curtis

Dan & Mary Kay Schippers

## Correction

The \$50,000 gift from Don Bickle is not for the Hays site as stated in the Winter 2022 newsletter. His generous gift is for much needed storage space to be created at the Victoria Site.

For recent happenings or exciting news that did not make the newsletter...



# THANK YOU — SPONSORS

Sponsorship dues go directly to operating expenses of the society. Staff, utilities, insurances etc. are all an important part of regular business even for a non-profit. ECHS depends on public funding for a large portion of operating expenses but those are subsidized with private donations like memberships. A sponsorship is a membership at a higher level of support.

## WERTH WEALTH MANAGEMENT LLC

LYLE NOORDHOEK

KAYS EAGLE RADIO

### AMBASSADOR

(\$1500+)

#### Benefactor (\$1,000- \$1499)

JEFF PINKNEY CPA, Inc.

HAYS LIONS CLUB

#### Settler (\$500 to \$999)

Insurance Planning

Kiwanis Club of Hays

Midwest Energy

Brian Gribben

Classic Quality Body Shop

Patricia Phillips\*

Downing Nelson Oil

Emprise Bank

Bank of Hays

#### Homesteader (\$250 to \$499)

Andrew & Kathy Rupp\*

Leona Madden

Melanie Roth

Danny & Sandy Jacobs

HAYS CVB

Neal & Carolyn Younger\*

Daniel & Mary Kay Schippers

Hays Medical Center\*

#### Pioneer (\$100 to \$249)

Bill & Renette Saba

Jared & Marli Schippers

Paul Wertenberger Construction

Brad & Amanda Ricke

Jerry Braun

JoAnn Scurlock & Richard Beal

Brent & Sasha Schippers

Jim & Cherie Leiker

Robert & Chris Luehrs

Christopher Janzen

JoAnn Koerner

Robert Pfeifer

Colleen Ricke

John & Sybil Brauer

Roger & Nancy Harman

Cora Schulte

John Vincent & Elizabeth Harris

Stan "Bud" Dalton

Cynthia Goetz Stone

Juti Winchester & Bob White

Steve & Sherry Crow

Field Abstract & Title LLC

Kay Lynn & Jay Barker\*

Sunflower Electric Power Corp

Gene & Cheryl Stramel

Keith Gustin

The Local Food Truck

Glenn & Amy Braun

Lawrence & Eva Gould

Tim & Linda Miller

Glenn & Holly Unrein\*

Layton & Jerry Kaiser

Tom & Barbara Wasinger

Gustin Appraisal LLC\*

Lyn & Janis Lee

Tom & Patricia Drees

Jack & Peggy McCullick

Marilyn Ebersole

James & Teresa Feyerherm

Patsy Teller

#### Scout (\$75 to \$99)

Jean Stramel

Patricia Thibault\*

Stephen & Joanne Tramel

\* Big thank you to our recently joined/renewed at higher level sponsors.

Ellis County Historical Society

100 W 7th

Hays, KS 67601

Phone: (785) 628-2624

director@echshays.org

Non-Profit Org

U.S. Postage

PAID

Hays, KS 67601

Permit No. 27

Return Service Requested

**Your membership will expire on**

Your most current membership level is \_\_\_\_\_

**This agency is funded in part by  
the City of Hays and Ellis County Kansas.**

New Family Membership Special \$15

Gifted Membership from: \_\_\_\_\_



**MEMBERSHIP APPLICATION**

\_\_\_\_ Student \$10  
(ID required)  
CODE 1130

\_\_\_\_ Senior \$10  
(65 and up)  
CODE 1140

\_\_\_\_ Single \$15  
CODE 1110

\_\_\_\_ Family \$25  
CODE 1120

\_\_\_\_ Lifetime 500  
(Single)  
CODE 1150

\_\_\_\_ Lifetime \$500  
(Couple)  
CODE 1160

\_\_\_\_ SCOUT (\$75 - \$99)  
CODE 1170

\_\_\_\_ PIONEER (\$100 - \$249)  
CODE 1175

\_\_\_\_ HOMESTEADER (\$250-\$499)  
CODE 1180

\_\_\_\_ SETTLER (\$500 - \$999)  
CODE 1185

\_\_\_\_ BENEFACTOR (\$1,000-\$1499)  
CODE 1190

\_\_\_\_ AMBASSADOR (\$1500+)  
CODE 1192

NAME/BUSINESS \_\_\_\_\_

ADDRESS \_\_\_\_\_

CITY \_\_\_\_\_ STATE \_\_\_\_\_ ZIP \_\_\_\_\_

PHONE \_\_\_\_\_ EMAIL \_\_\_\_\_

*Please make checks payable to the ELLIS COUNTY HISTORICAL SOCIETY*

**ENTER credit card information below**

\_\_\_\_ Visa \_\_\_\_ Mastercard \_\_\_\_ American Express \_\_\_\_ Discover

Acc # \_\_\_\_\_ CVV# \_\_\_\_\_ Exp. Date \_\_\_\_\_

Signature \_\_\_\_\_ Amount \$ \_\_\_\_\_

**You are a person who understands  
the value of history. Thank you!**